

# Gym Assistant PDF Printer Install and Usage

May 2010  
www.GymAssistant.com

## 1. Background - Why do I need this?

Some customers have reported problems printing from 64-bit versions of Windows Vista and Windows 7. This document outlines the steps to setup and use a print driver that will workaround any printer incompatibilities.

### *You need this special printer driver only if:*

- a) You are using a 64-bit version of Windows, **AND**
- b) You have an HP printer, **AND**
- c) Gym Assistant and ProShop are not printing correctly.

### *How do I find what version of Windows I have?*

- Click the **Start** button
- Right-click on **Computer**
- Left-click on **Properties**
- Under **Windows Edition** you should see something like "Window 7 Professional".
- Under **System** you should see **System Type** or 32-bit or 64-bit Operating System

## 2. Install the Gym Assistant Print\_PDF driver

**Note:** You will need to be logged into the computer with Administrator privileges to complete this install.

Download the Print\_PDF printer driver at:

[www.gymassistant.com/download/utilities/Print\\_PDF\\_Setup.exe](http://www.gymassistant.com/download/utilities/Print_PDF_Setup.exe)

When asked "Do you want to run or save this file?" click Run to install.

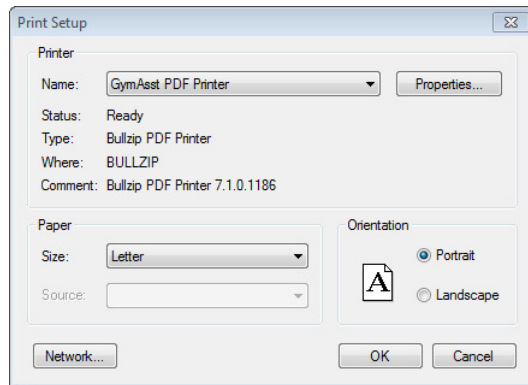
## 3. Install Adobe Reader (if necessary)

If you do not already have Adobe Reader installed on your computer, you can download it at:

<http://get.adobe.com/reader/>

## 4. Select the Print\_PDF printer in Gym Assistant and ProShop

In Gym Assistant select Print Setup from the File menu.



Select the Gym Asst PDF Printer, then click OK.

You should also select this printer in any other places where a printer is selected:

- File/Print Setup
- Settings/Membership Cards - Printer Setup
- Settings/Receipt Printing - Print Setup (if not using a receipt printer)

## 5. If you need support...

Please contact Gym Assistant Support at:

Toll-Free: 1-877-496-2778, ext 2  
Phone: 1-510-865-1815, ext 2  
Email: support@GymAssistant.com